

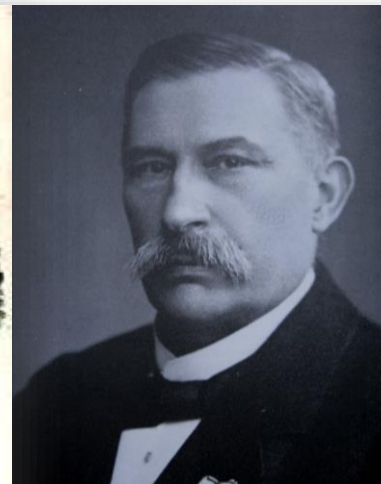


Private Boarding School Ernst-Kalkuhl Gymnasium in Bonn



History and organisation of the Boarding School:

- Founded by Ernst-Kalkuhl in 1880
- Has been owned and managed since its foundation by family Kalkuhl-Heel



Basic Information:

- ▣ Total number of students: **650**
- ▣ Boarding students: **80**
- ▣ Day-time boarding students: **80**
- ▣ International students: **45**





Location:
BONN





Headquarter of DHL



UN Campus with 20 organizations



World Conference Center Bonn



Kameha Grand Hotel



River Rhine

River Rhine

Aerospace of Germany



Headquarter Bonn Police



City Center of
Bonn

Cologne





River
Rhine

Train Station to:

- Centre of Cologne (39 minutes)
- Airport Cologne/ Bonn (22 minutes)





The Campus



The Campus



The Campus



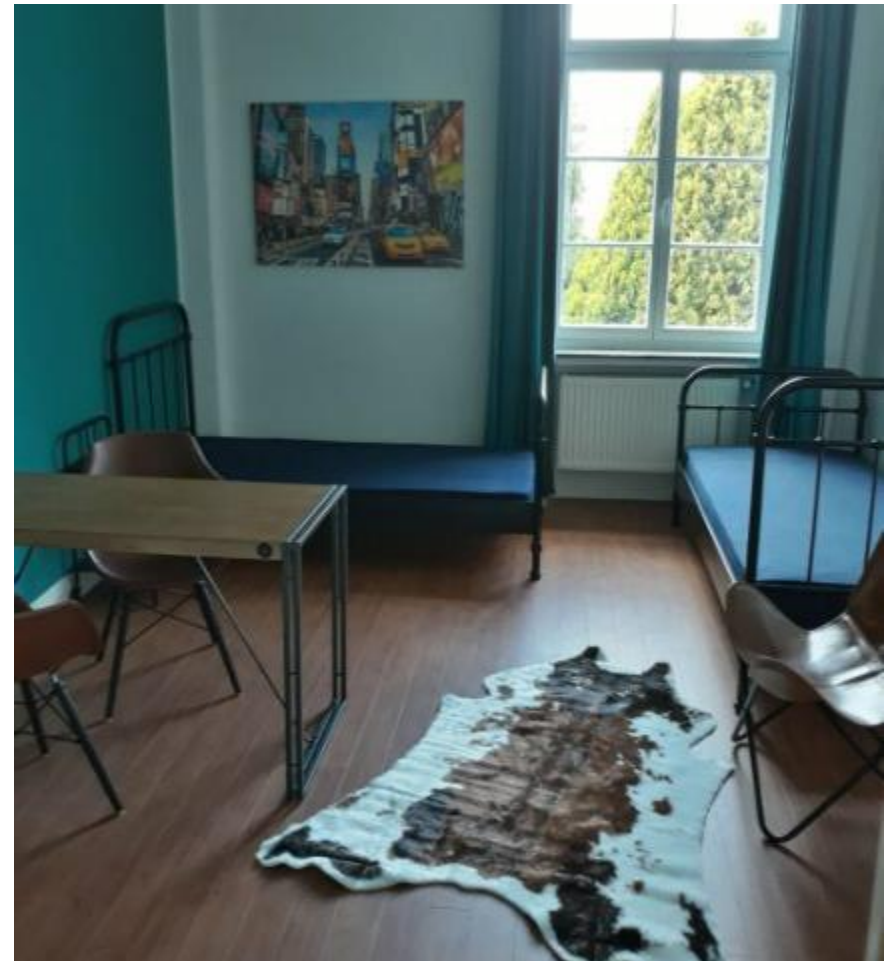
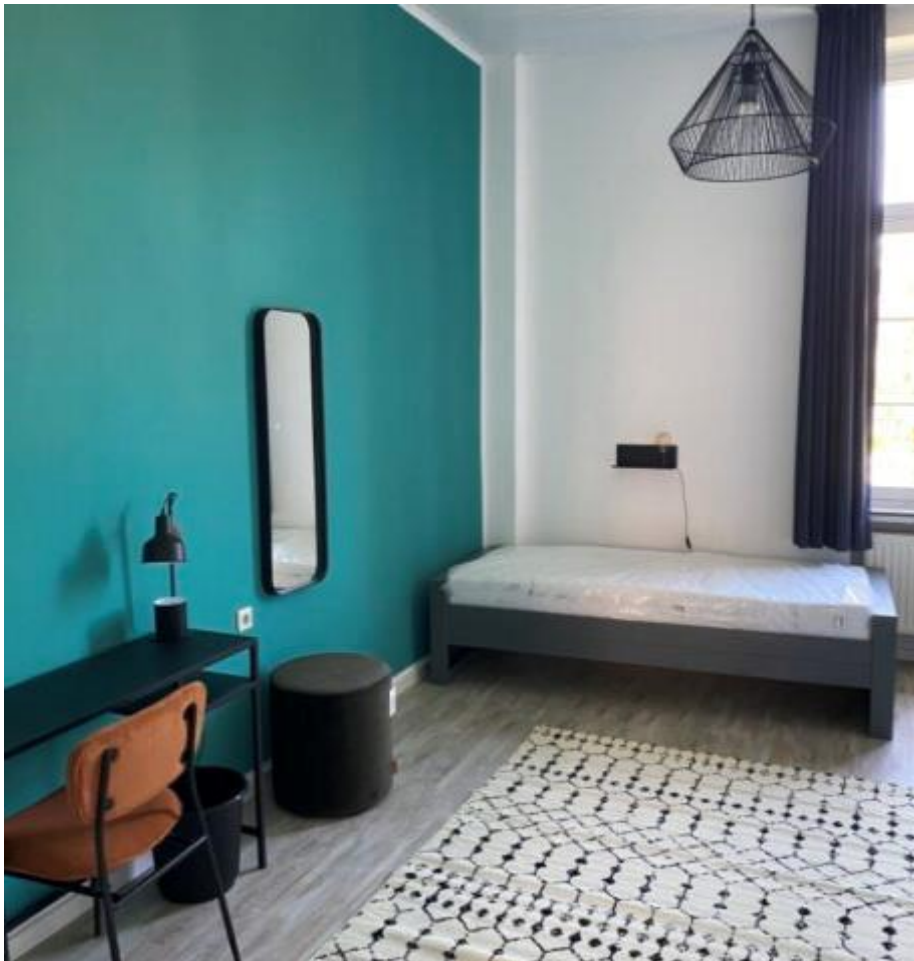
The Campus



The Campus



The Residence



The Residence



The Residence



The Residence



The Residence



Recreation rooms



Recreation rooms



Life in Kalkuhl



Academic Concept

- The students visit the School on the same campus until lunch-time. Thereafter begins the program by the Boarding School
- Each class/ year has its own pedagogue
- 2 hours of “Silentium” each day
- Extra classes for the academic improvement



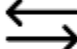
Academic Concept



Support for international students at EKG:

Objectives:

- Integration
- Building of strong and intercultural friendships
- Successful graduation („Abitur“)

Requirements: Proficient German language skills  „from colloquial language to educational language“

Our concept:



DaF (German as a Foreign Language)

EF (Grade 10):
Systematic improvement of:

- oral skills
- grammar
- vocabulary

Q1 (Grade 11):

- Focus on differentiated expression
- Presentation skills

Q2 (Grade 12):

- Preparation for „Abitur“
- Educational language – oral and written



Educational Support

- Specialist Silentium: intensive preparation and revision of subject matter in small groups
- Collaboration: School – Boarding School: Feedback-Systems, Feedback culture
- Qualified personnel for language sensitive schooling



Program in & outside the Boarding School

- Sport (clubs, studios)
- Music (lessons, band)
- Tandem-learning
- Buddy Program
- House Activities

Extras for our international boarding students

- Weekly DaF courses to improve German (DaF course = German for Foreigners)
- Buddy Program
- The Boarding School does not close during holidays (with exception Christmas and Summer)



Thank you for your attention!

